




Season 1: 8 x 60'
Season 2: 8 x 60' - coming in 2024



MARIE ANTOINETTE





Created and written by Deborah Davis (*The Favourite*), *Marie Antoinette* tells the story of the incredibly modern and avant garde young queen, played by Emilia Schüle (*Ku'damm 56/63*).

Through a 21st century lens, the series will explore the dark, manipulative and misogynistic world of Versailles. The series travels deep inside Marie Antoinette's head, discovering who she is through her internal voice that often contrasts with the dramatic situations she finds herself in.



Season 1 starts with Marie Antoinette's journey into the heart of the French Court where her enemies are waiting to greet her – and it is destined to be a rollercoaster.

Marie Antoinette was barely 14 years old when she left Austria to marry the Dauphin of France. Growing from a stubborn young princess navigating the rules of the French court under pressure to continue the Bourbon line, to a true fashion icon, she impressed with her natural charisma, and recreated life in Versailles in her image: free, independent, and feminist ahead of her time. Even with rumours undermining her reputation, the notorious figure would defeat the enemies of the Versailles court with courage and dignity.



In the second season, bigger and stronger enemies are waiting in the wings to destroy Marie Antoinette. The higher she climbs in the estimation of the French people, the greater the threats are against her.

At the height of their power, Marie Antoinette and Louis face an unprecedented financial crisis. The incessant attacks of Provence and Chartres against the royal couple stir up the hatred of the nobles while disastrous consequences are looming with the Diamond Necklace Affair. From Versailles to the Palais-Royal, the revolt rumbles... She gathers Louis and her surviving children around her.

Whatever comes next, Marie Antoinette is ready for it.

“ An enjoyably intriguing series... Sumptuous period fare”

The Observer

“ A heroine magnificently embodied by Emilia Schüle... A great success”

Le Parisien

“ Dazzling new historical drama”

Evening Standard

“ A must-watch”

Stylist

“ There has been no shortage of fictional portrayals of the last queen of France, but this drama could be the sparkiest, cleverest and most interesting yet... hugely entertaining”

The Guardian

“ A visually rich saga of power, betrayal and rule-breaking”

The Sun

“ A dazzlingly glamorous drama... a fabulously decadent retelling of history”

Tatler

“ Handsome period drama”

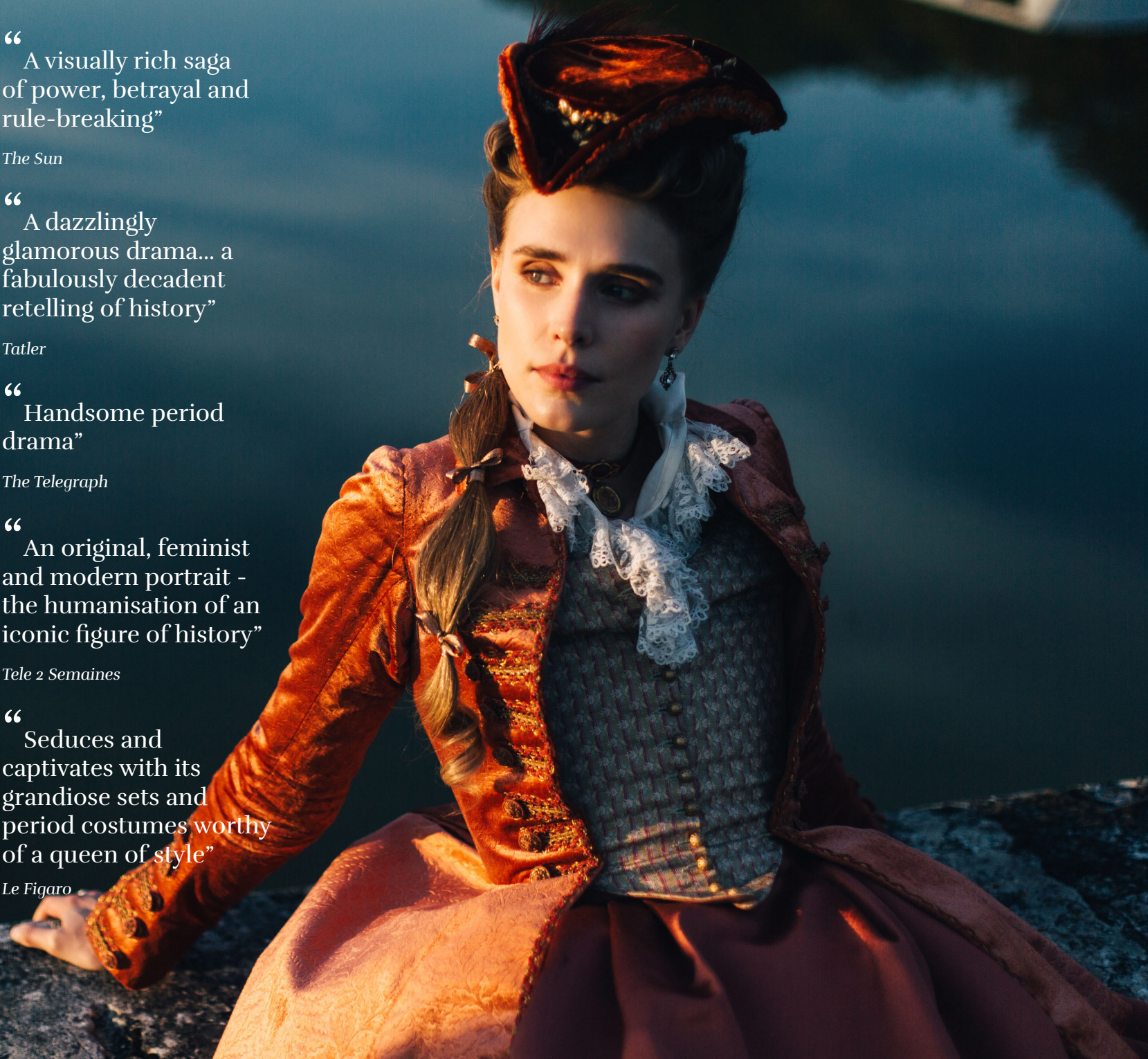
The Telegraph

“ An original, feminist and modern portrait - the humanisation of an iconic figure of history”

Tele 2 Semaines

“ Seduces and captivates with its grandiose sets and period costumes worthy of a queen of style”

Le Figaro



Popular with French audiences on Canal+

- » The premiere episode outperformed the slot average by an impressive 111%
- » Exceeded its overnight viewership by 78% in catch up
- » An excellent performance across the season, delivering 33% above the slot average

An outstanding launch on BBC Two (UK)

- » The premiere delivered a consolidated audience of nearly 2m viewers, above the slot average by an impressive +140%
- » Performing well for younger viewers, more than doubling the broadcaster's slot average by +140% for Adults 16-34
- » Maintaining this success the episode also outperformed the slot average across all key demographics for Adults 35-54 (+128%), Adults 55+ (+103%), ABC1 Adults (+146%), Housewives (+122%), Men (+104%) and Women (+129%)







 SCREEN NOW

 Banijay Studios
France
We are Banijay

 CAPA
drama

 CANAL+

 BBC

 PBS